

Other Steppingstone Programs

Men's Treatment Program

466 North Main Street
Fall River, MA 02720
508-674-2788 x 102

Women's Treatment Program

522 North Main Street
Fall River, MA 02720
508-674-2788 x 101

Women's Treatment Program

979 Pleasant Street
New Bedford, MA 02740
508-984-1880

Outpatient Treatment Program

179 North Main Street
Fall River, MA 02720
508-679-0033

Next Step Home Program

506 North Main Street
Fall River, MA 02720
508 674-2788 x 113

Graduate Program

506 North Main Street
Fall River, MA 02720
508-674 -2788

Women's Graduate Program

977 Pleasant Street
New Bedford, MA 02740
508-984-1880

First Step Inn

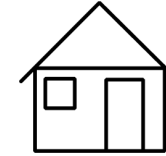
134 Durfee Street
Fall River, MA 02720
508-679-3001

The Stone Residence

177 North Main Street
Fall River, MA 02720
508-675-4159



The First Step Inn
134 Durfee Street
Fall River, MA 02720



CSPECH

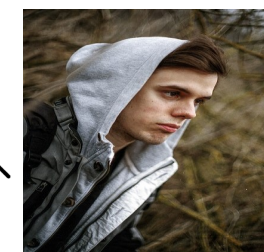
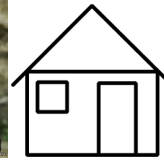
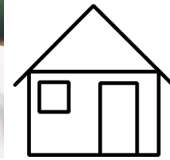


Steppingstone, Inc.

Community Support
for persons experiencing
Chronic Homelessness

**Serving Chronic Homeless
Individuals in Fall River and
New Bedford, Massachusetts**





Admission Criteria

CSPECH serves chronic homeless men and women in Fall River and New Bedford who are:

- 18 years of age or older
- Chronic homeless in the City of Fall River or New Bedford, Massachusetts
- Living and diagnosed with substance abuse and mental health
- Masshealth Insurance members of Beacon, MBHP, and Tufts

CSPECH Goals

CSPECH services help achieve these goals:

- To help stabilize and improve the lives of a high-risk, high-cost population by following Housing First, low threshold model
- To reduce the use of high-cost health services, such as the emergency department. (CSPECH works closely with clients once they are housed to ensure their access to needed health services)
- Contribute to reduce chronic homelessness in the communities served
- Provide support services for as long as an individual remains housed and is in need
- Helping clients establish life structure, learn self-management and independent living skills, and ultimately reintegrate into

We help by

- Advocating on behalf of clients to landlords, healthcare providers, family members, and others to help ensure stability in housing
- Providing tenancy support by negotiating with landlords for repairs and maintenance
- Assisting client with maintaining clean and sanitary living conditions as well as negotiating financial arrangements (security deposits, maintaining checking accounts, monthly budgets)
- Teaching and assisting clients home, community and daily living skills and responsibilities such as budgeting, cleaning, cooking, social interactions as needed
- Assisting clients with coordinating and setting up appointments with doctors, employers, and other appointment needs
- Transportation
- Accompanying clients through processes of medical, housing, legal and support services systems
- Linking clients to needed services, assisting in navigating systems and addressing any barriers or threats to housing stability
- Developing housing goals and crisis plans
- Providing client-centered services

Referral Process

All individuals seeking assistance or service provider making a referral must:

- Complete CSPECH Program Referral Form
- Fax referral form to **774-365-6153**

For further information contact the CSPECH program at **774-294-4684**



Steppingstone is a United Way Agency